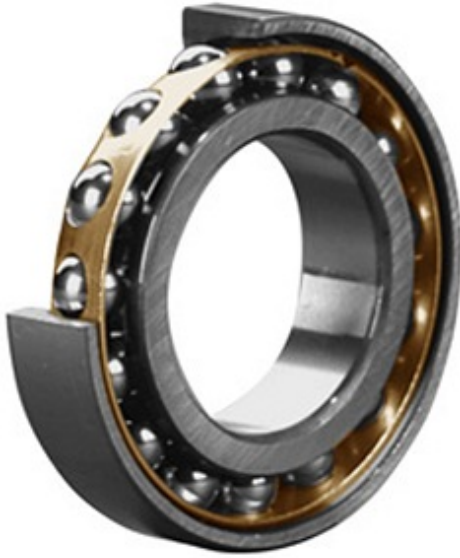




KRY BEARING AFRICA PRIVATE LTD.



6.299 Inch | 160 Millimeter x 11.417 Inch | 290
Millimeter x 1.89 Inch | 48 Millimeter SKF 7232
BCBM/W64 Angular Contact Ball Bearings

Bearing No. 7232 BCBM/W64

7232 BCBM/W64 Bearing 2D drawings and 3D CAD
models

Category	Angular Contact Ball Bearings
Inventory	0.0
Manufacturer Name	SKF
Minimum Buy Quantity	N/A
Weight	0
Product Group	B00308
Enclosure	Open
Flush Ground	Yes
Rolling Element	Ball Bearing
Number of Rows of Balls	Single Row
Precision Class	ABEC 1 ISO P0
Maximum Capacity / Filling Slot	No
Snap Ring	No
Cage Material	Brass
Contact Angle	40 Degree
Internal Clearance	CB
Number of Bearings	1 (Single)
Mounting Arrangement	Universal
Inch - Metric	Metric
Long Description	160MM Bore; 290MM Outside Diameter; 48MM Width; Open; Yes Flush Ground; Ball Bearing; Single Row of Balls; ABEC 1 ISO P0; No Filling Slot; No Snap



KRY BEARING AFRICA PRIVATE LTD.

	Ring; CB; Brass Cage; 40 Degree; 1 (Single); Univer
Other Features	Normal Axial Internal Clearance
Category	Angular Contact Ball Bearing
UNSPSC	31171531
Harmonized Tariff Code	8482.10.50.28
Noun	Bearing
Keyword String	Angular Contact
Manufacturer URL	http://www.skf.com
D	11.417 Inch 290 Millimeter
B	1.89 Inch 48 Millimeter
d	6.299 Inch 160 Millimeter