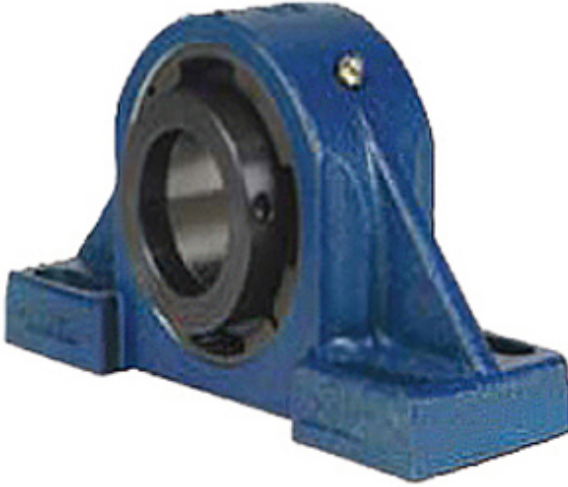




# KRY BEARING AFRICA PRIVATE LTD.



5.512 Inch | 140 Millimeter x 7.56 Inch | 192.024  
Millimeter x 6.688 Inch | 169.875 Millimeter QM  
INDUSTRIES QMPX30J140SEO Pillow Block  
Bearings

Bearing No. QMPX30J140SEO

QMPX30J140SEO Bearing 2D drawings and 3D CAD  
models

Category	Pillow Block Bearings
Inventory	0.0
Manufacturer Name	TIMKEN
Minimum Buy Quantity	N/A
Weight	106.69
EAN	0883450253352
Product Group	M06288
Number of Mounting Holes	4
Mounting Method	Eccentric Collar
Housing Style	4 Bolt Pillow Block
Rolling Element	Spherical Roller Bearing
Housing Material	Cast Steel
Expansion / Non-expansion	Expansion
Mounting Bolts	1-1/8 Inch
Relubricatable	Yes
Insert Part Number	23230
Seals	Triple Lip Urethane
Housing Configuration	1 Piece Solid
Inch - Metric	Metric
Other Features	Double Row
Long Description	4 Bolt Pillow Block; 140MM Bore; 169.875MM Base to Center Height; Eccentric Collar Mount; Spherical Roller Bearing; 439.928MM



## KRY BEARING AFRICA PRIVATE LTD.

	Minimum Bolt Spacing; 485.775MM Bolt Spacing Maximum; Relubricatable; Cast
Category	Pillow Block
UNSPSC	31171511
Harmonized Tariff Code	8483.20.40.80
Noun	Bearing
Keyword String	Pillow Block
Manufacturer URL	<a href="http://www.qmbearings.com">http://www.qmbearings.com</a>
Weight / LBS	250
d	5.512 Inch   140 Millimeter
B	6.688 Inch   169.875 Millimeter
D	7.56 Inch   192.024 Millimeter
Nominal Bolt Center to Center	18.3 Inch   464.8 Millimeter
Bolt Spacing Minimum	17.32 Inch   439.928Millimeter
Bolt Spacing Maximum	19.125 Inch   485.775Millimeter
Actual Bolt Center to Center	0 Inch   0Millimeter