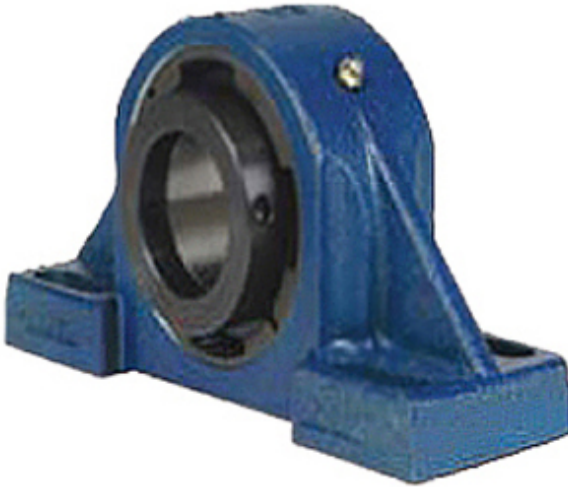




# KRY BEARING AFRICA PRIVATE LTD.



2.559 Inch | 65 Millimeter x 4.09 Inch | 103.886 Millimeter x 3.15 Inch | 80 Millimeter QM INDUSTRIES QVVP15V065SEC Pillow Block Bearings

Bearing No. QVVP15V065SEC

QVVP15V065SEC Bearing 2D drawings and 3D CAD models

Category	Pillow Block Bearings
Inventory	0.0
Manufacturer Name	TIMKEN
Minimum Buy Quantity	N/A
Weight	10.896
EAN	0883450221405
Product Group	M06288
Number of Mounting Holes	4
Mounting Method	V Lock
Housing Style	4 Bolt Pillow Block
Rolling Element	Spherical Roller Bearing
Housing Material	Cast Steel
Expansion / Non-expansion	Expansion
Mounting Bolts	5/8 Inch
Relubricatable	Yes
Insert Part Number	22215
Seals	Double Lip Viton
Housing Configuration	1 Piece Solid
Inch - Metric	Metric
Other Features	Double Row   Double Nut   SN Style
Long Description	4 Bolt Pillow Block; 65MM Bore; 80MM Base to Center Height; V Lock Mount; Spherical Roller Bearing;



## KRY BEARING AFRICA PRIVATE LTD.

	201.676MM Minimum Bolt Spacing; 246.126MM Bolt Spacing Maximum; Relubricatable; Cast Steel; Double L
Category	Pillow Block
UNSPSC	31171511
Harmonized Tariff Code	8483.20.40.80
Noun	Bearing
Keyword String	Pillow Block
Manufacturer URL	<a href="http://www.qmbearings.com">http://www.qmbearings.com</a>
Manufacturer Item Number	QVVPG15V065SEC
Weight / LBS	29
d	2.559 Inch   65 Millimeter
Nominal Bolt Center to Center	8.8 Inch   223 Millimeter
B	3.15 Inch   80 Millimeter
D	4.09 Inch   103.886 Millimeter
Actual Bolt Center to Center	0 Inch   0 Millimeter
Bolt Spacing Maximum	9.69 Inch   246.126 Millimeter
Bolt Spacing Minimum	7.94 Inch   201.676 Millimeter