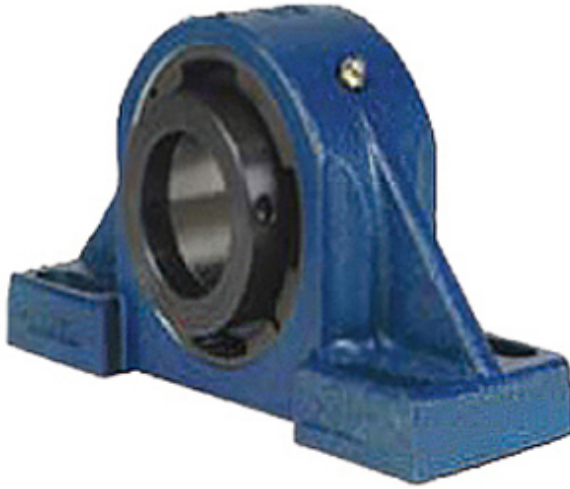




# KRY BEARING AFRICA PRIVATE LTD.



2.362 Inch | 60 Millimeter x 4.09 Inch | 103.886 Millimeter x 3.252 Inch | 82.6 Millimeter QM INDUSTRIES QVVPH15V060SEC Pillow Block Bearings

Bearing No. QVVPH15V060SEC

QVVPH15V060SEC Bearing 2D drawings and 3D CAD models

Category	Pillow Block Bearings
Inventory	0.0
Manufacturer Name	TIMKEN
Minimum Buy Quantity	N/A
Weight	10.896
EAN	0883450221672
Product Group	M06288
Number of Mounting Holes	4
Mounting Method	V Lock
Housing Style	4 Bolt Pillow Block
Rolling Element	Spherical Roller Bearing
Housing Material	Cast Steel
Expansion / Non-expansion	Expansion
Mounting Bolts	1/2 Inch
Relubricatable	Yes
Insert Part Number	22215
Seals	Double Lip Viton
Housing Configuration	1 Piece Solid
Inch - Metric	Metric
Other Features	Double Row   Double Nut   SAF Style
Long Description	4 Bolt Pillow Block; 60MM Bore; 82.6MM Base to Center Height; V Lock Mount; Spherical Roller



## KRY BEARING AFRICA PRIVATE LTD.

	Bearing; 201.676MM Minimum Bolt Spacing; 246.126MM Bolt Spacing Maximum; Relubricatable; Cast Steel; Double
Category	Pillow Block
UNSPSC	31171511
Harmonized Tariff Code	8483.20.40.80
Noun	Bearing
Keyword String	Pillow Block
Manufacturer URL	<a href="http://www.qmbearings.com">http://www.qmbearings.com</a>
Manufacturer Item Number	QVVPH15V060SEC
Weight / LBS	29
d	2.362 Inch   60 Millimeter
Bolt Spacing Maximum	9.69 Inch   246.126Millimeter
Actual Bolt Center to Center	0 Inch   0Millimeter
B	3.252 Inch   82.6 Millimeter
D	4.09 Inch   103.886 Millimeter
Bolt Spacing Minimum	7.94 Inch   201.676Millimeter
Nominal Bolt Center to Center	8.8 Inch   223 Millimeter