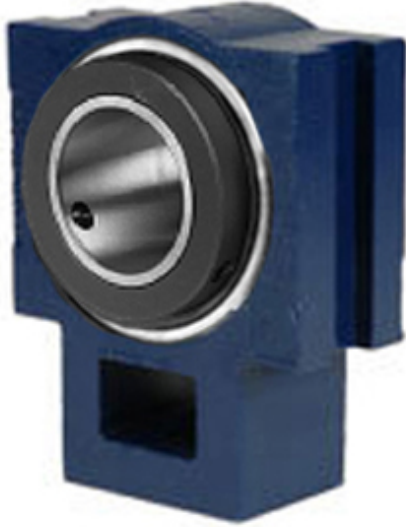




KRY BEARING AFRICA PRIVATE LTD.



QMTU20J312SN Bearing 2D drawings and 3D CAD models

QM INDUSTRIES QMTU20J312SN Take Up Unit Bearings

Bearing No. QMTU20J312SN

Category	Take Up Unit Bearings
Inventory	0.0
Manufacturer Name	TIMKEN
Minimum Buy Quantity	N/A
Weight	21.792
EAN	0883450104241
Product Group	M06288
Component Description	Take Up Bearing Only
Rolling Element	Spherical Roller Bearing
Housing Style	Unit Only
Mounting Method	Eccentric Collar
Compatible Take Up Frame	QMTF
Adjustment Travel Length	0
Insert Part Number	22220
Housing Material	Cast Steel
Other Features	Double Row Non-expansion Three Lip Viton Seal Steel Cage
Inch - Metric	Inch
Long Description	Take Up Bearing Only; 3-3/4" Bore; 2.06" Slot Width; 8-5/8" Slot to Slot Distance; Spherical Roller Bearing; Unit Only; Eccentric Collar Mount; QMTF Take Up Frame; 22220 Insert Part; Ca
Category	Take Up Units



KRY BEARING AFRICA PRIVATE LTD.

UNSPSC	31171533
Harmonized Tariff Code	8483.20.40.80
Noun	Bearing
Keyword String	Take Up
Manufacturer URL	http://www.qmbearings.com
Weight / LBS	58
Slot Width	2.06 Inch 52.324 Millimeter
d	3.75 Inch 95.25 Millimeter
Slot to Slot Distance	8.625 Inch 219.08 Millimeter